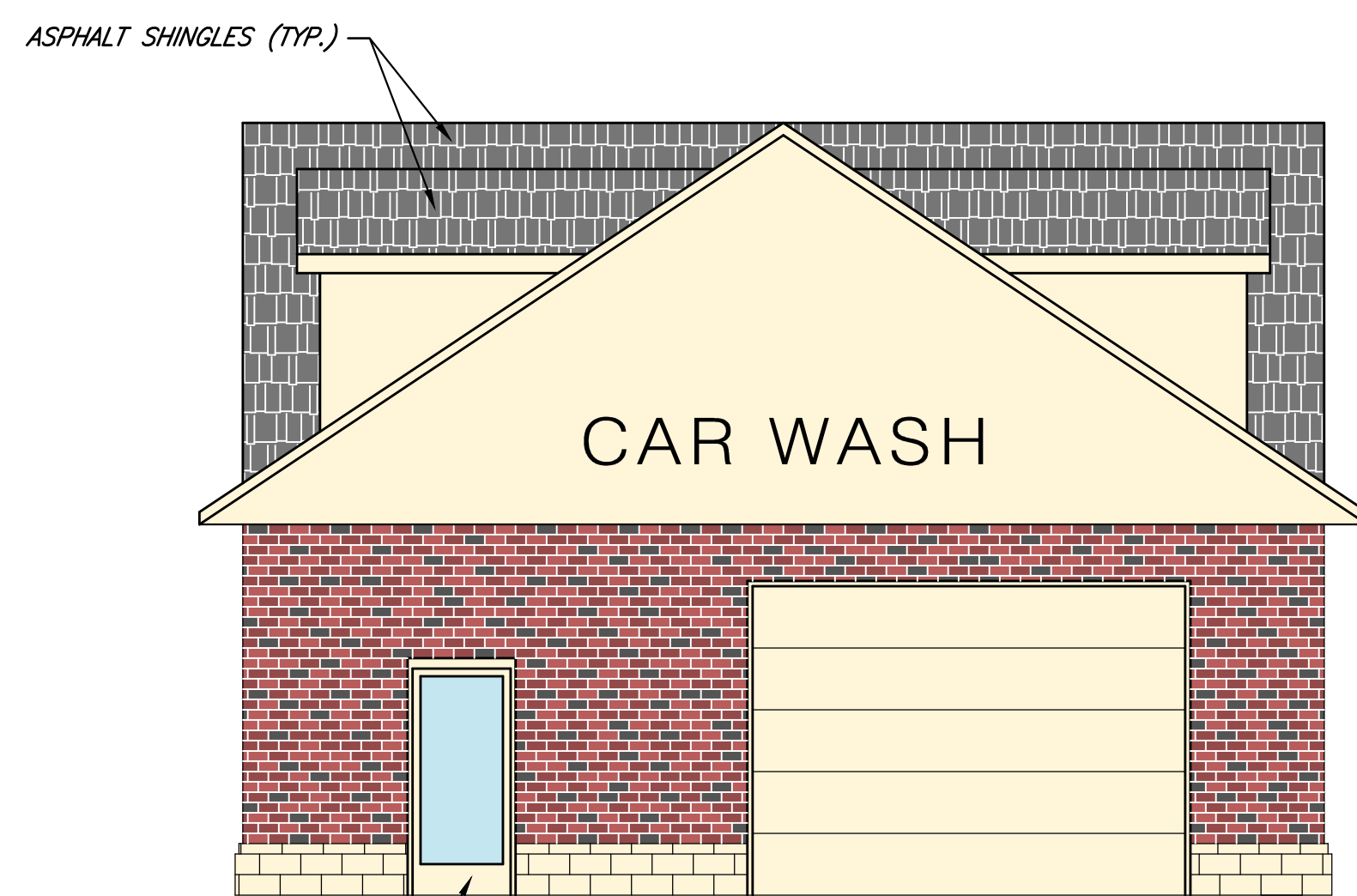
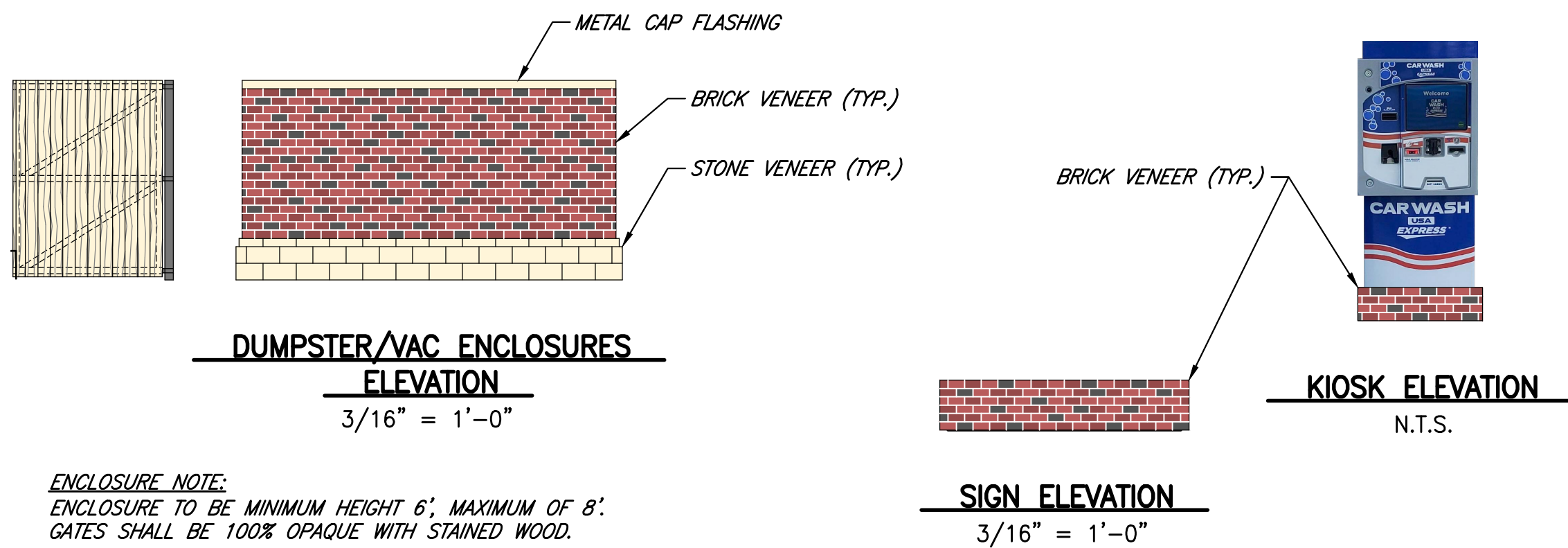


EAST ELEVATION
3/16" = 1'-0"



NORTH ELEVATION
3/16" = 1'-0"



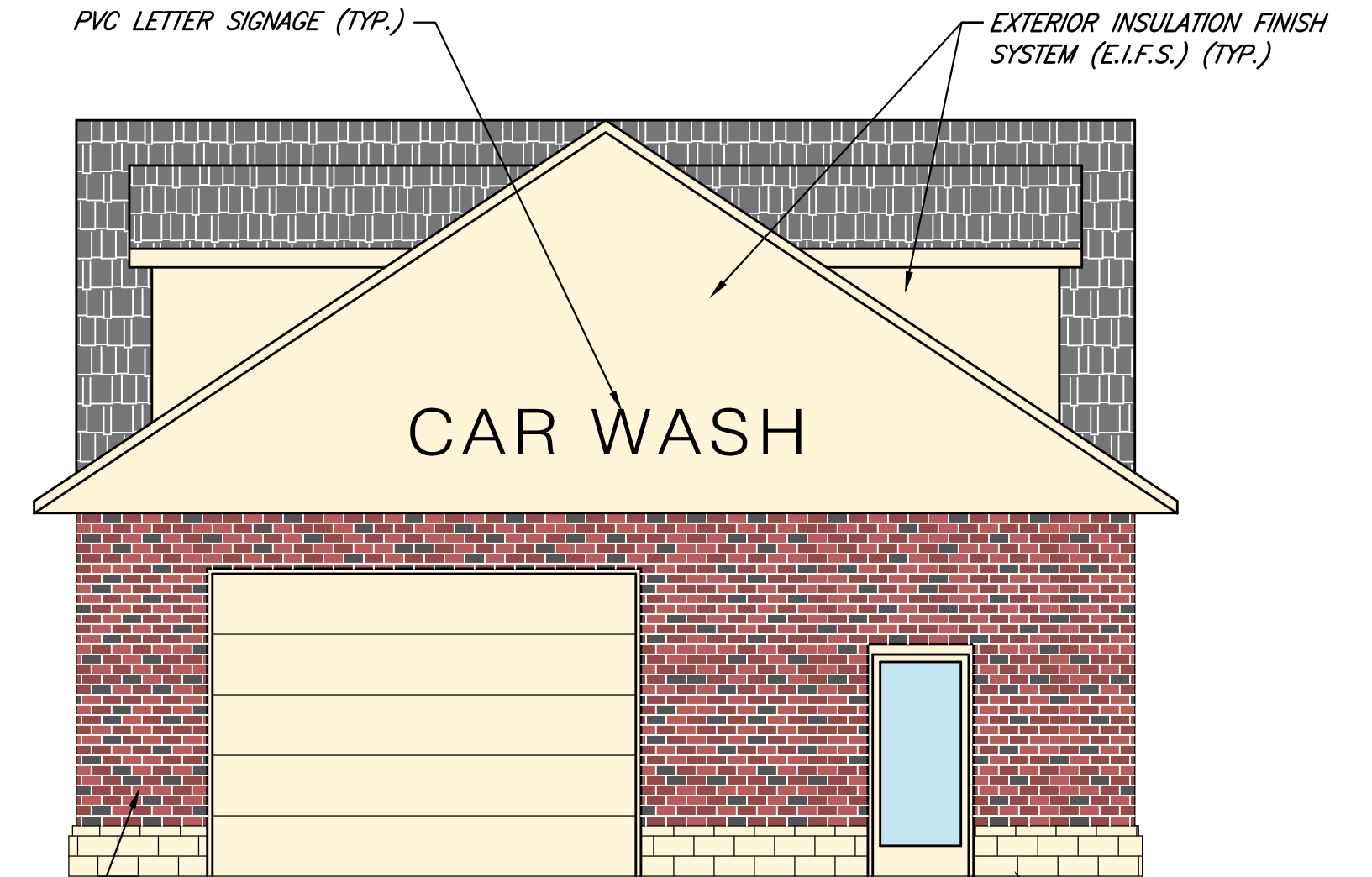
DUMPSTER/VAC ENCLOSURES ELEVATION
3/16" = 1'-0"

SIGN ELEVATION
3/16" = 1'-0"

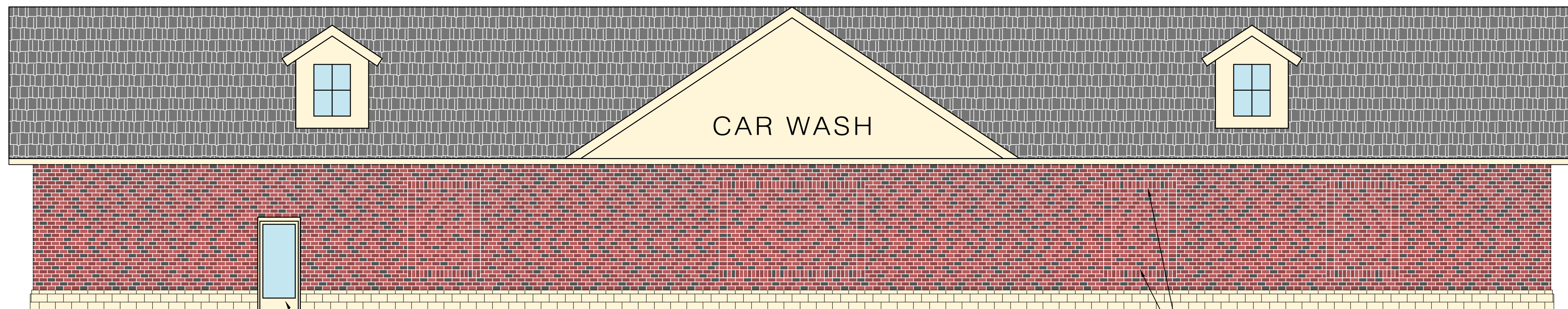
KIOSK ELEVATION
N.T.S.

ENCLOSURE NOTE:
ENCLOSURE TO BE MINIMUM HEIGHT 6', MAXIMUM OF 8'.
GATES SHALL BE 100% OPAQUE WITH STAINED WOOD.

MATERIAL SCHEDULE	
MATERIAL	MANUFACTURER & DETAILS
BRICK VENEER	BELDEN: MODULAR BELCREST 560A
STONE VENEER	SHOULDICE: ARCHITECTURAL, ROCK-STONE, CHAMOIS
MORTAR AT BRICK/STONE	CEMEX: 58H
ALUMINUM STOREFRONTS	KAWNEER: TRIFAB VERSAGLAZE 451T, 2"x4 1/2", ANTIQUE BRONZE
E.I.F.S.	BASF: SENERGY SENERFLEX, FINE FINISH, CHAMPAGNE
ASPHALT SHINGLES	OWENS CORNING: DURATION SERIES (30), ESTATE GRAY
OVERHEAD DOORS	DBC: 650 SERIES, 26 GAUGE GALV. STEEL, SADDLE TAN



SOUTH ELEVATION
3/16" = 1'-0"



WEST ELEVATION
3/16" = 1'-0"

NOT FOR CONSTRUCTION