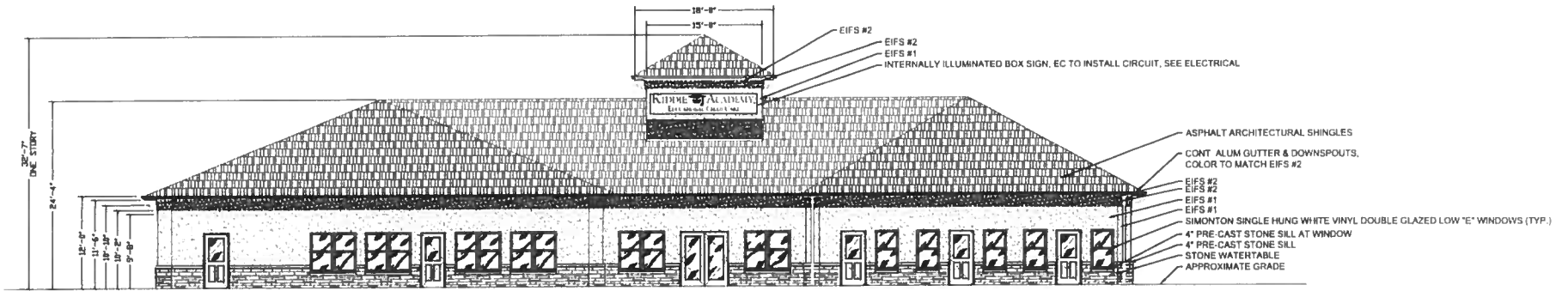


Received by
City of Grove City
09-25-19

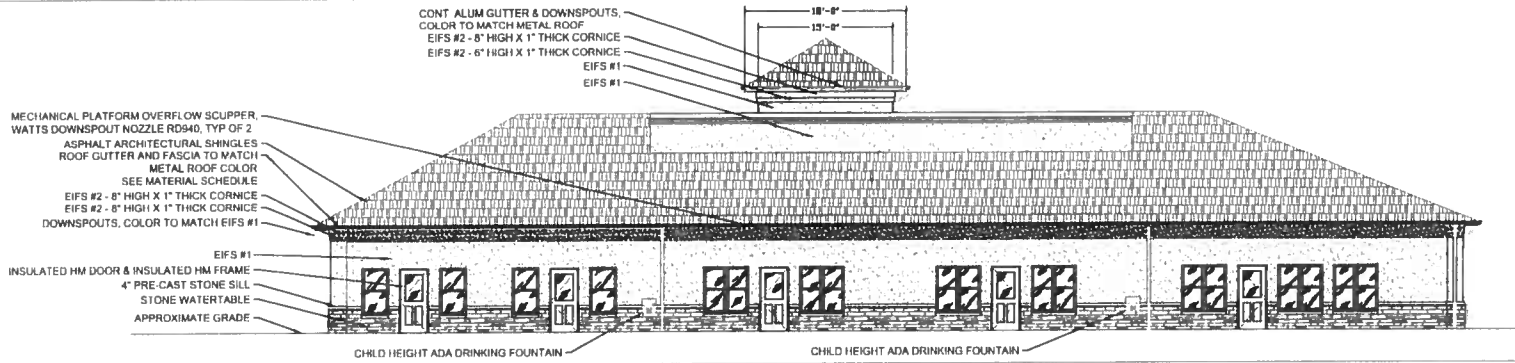


Kiddie Academy
Grove City, Ohio

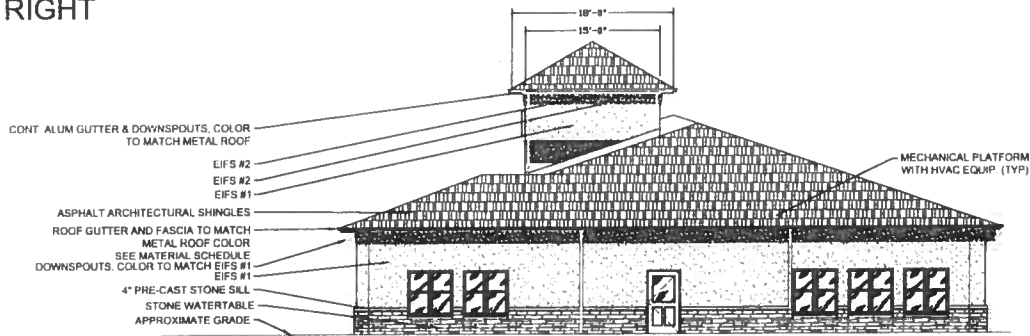
FRONT



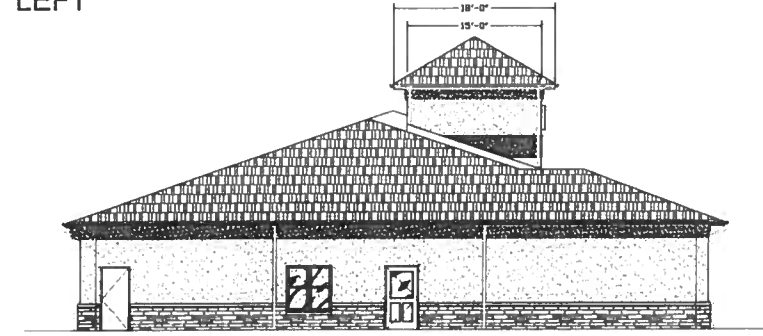
REAR



RIGHT



LEFT



THESE PLANS AND SPECIFICATIONS ARE SUBJECT TO A CONFIDENTIALITY AGREEMENT AND A NON-COMPETITION AGREEMENT. THESE PLANS AND SPECIFICATIONS WERE CREATED BY OR AT THE DIRECTION OF KIDDIE ACADEMY AND CONTAIN CERTAIN DISTINGUISHING CHARACTERISTICS OF THE KIDDIE ACADEMY SYSTEM AND, AS A RESULT, CONSTITUTE CONFIDENTIAL AND PROPRIETARY INFORMATION OF KIDDIE ACADEMY DOMESTIC FRANCHISING, LLC.

THE STANDARD PLANS, DESIGNS AND SPECIFICATIONS FOR A KIDDIE ACADEMY EDUCATIONAL CHILD CARE FACILITY HAVE BEEN MODIFIED HEREIN IN RESPONSE TO SPECIFIC CHANGES REQUESTED BY THE KIDDIE ACADEMY FRANCHISE APPLICANT. BE ADVISED THAT THE EMPLOYER OF KIDDIE ACADEMY DOMESTIC FRANCHISING, LLC WHO DRAWED THESE ARE NOT EXPERTS REGARDING THE BUILDING CODES AND/OR DAYCARE LICENSING REGULATIONS PROMULGATED IN THIS SPECIFIC JURISDICTION WHERE THE KIDDIE ACADEMY EDUCATIONAL CHILD CARE FACILITY IS TO BE LOCATED. IT IS THE RESPONSIBILITY OF THE FRANCHISE APPLICANT TO EMPLOY AN ARCHITECT, DRAFTSMAN AND/OR ENGINEER TO ADAPT AND MODIFY THE PLANS AND SPECIFICATIONS TO THE FRANCHISE APPLICANT'S KIDDIE ACADEMY EDUCATIONAL CHILD CARE FACILITY AS REQUIRED BY THE BUILDING CODES AND/OR CHILD CARE LICENSING REGULATIONS IN THE JURISDICTION. KIDDIE ACADEMY ACCEPTS NO RESPONSIBILITY OR LIABILITY FOR ANY VIOLATION OF SUCH CODES OR REGULATIONS OR OTHERWISE.

NOTE: ANY CHANGES TO THESE PLANS REQUIRE PRIOR WRITTEN APPROVAL BY AUTHORIZED REPRESENTATIVE OF KIDDIE ACADEMY DOMESTIC FRANCHISING, LLC.

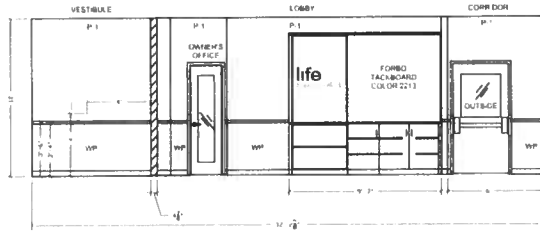
KIDDIE ACADEMY
EDUCATIONAL CHILD CARE

3415 BOX HILL CORPORATE CENTER DRIVE
ABINGDON, MD 21009

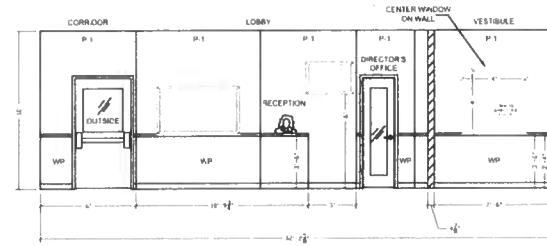
TITLE: FINISH EXTERIOR ELEVATIONS	
FZE:	LOCATION: 8,700 PROTO TYPE
DATE: 01-08-2018	DRAWN BY: SMD
SCALE: NTS (24X36)	CHECKED BY: CBC
FILE NO.:	SHEET NO.: 9 2 OF 12

NOT FOR CONSTRUCTION

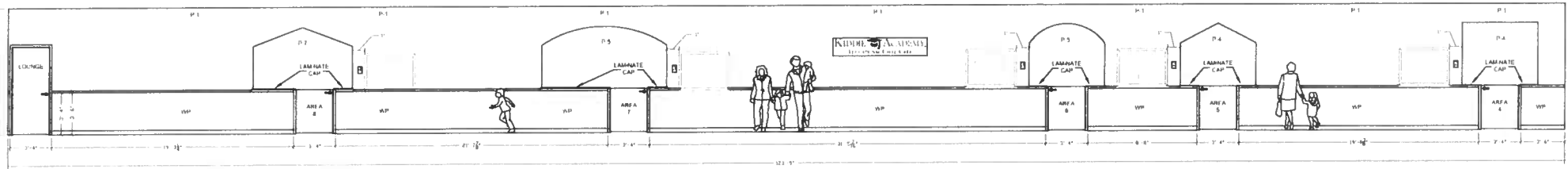
ELEVATION A



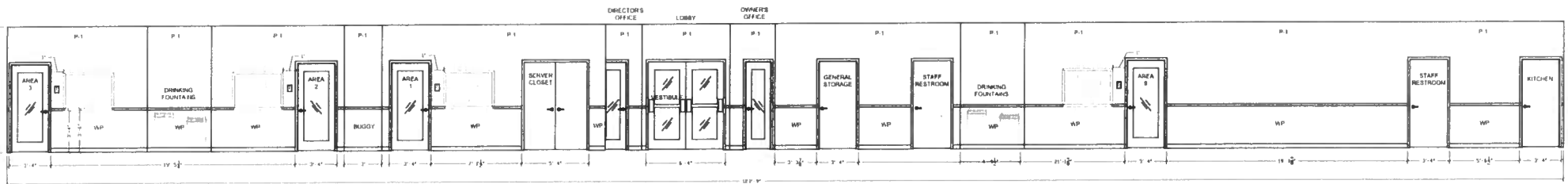
ELEVATION B



ELEVATION C



ELEVATION D



THESE PLANS AND SPECIFICATIONS ARE SUBJECT TO A CONFIDENTIALITY AGREEMENT AND A NON-COMPETITION AGREEMENT. THESE PLANS AND SPECIFICATIONS WERE CREATED BY OR AT THE DIRECTION OF KIDDIE ACADEMY AND CONTAIN CERTAIN DISTINGUISHING CHARACTERISTICS OF THE KIDDIE ACADEMY SYSTEM AND, AS A RESULT, CONSTITUTE CONFIDENTIAL AND PROPRIETARY INFORMATION OF KIDDIE ACADEMY DOMESTIC FRANCHISING, LLC.

THE STANDARD PLANS, DESIGNS AND SPECIFICATIONS FOR A KIDDIE ACADEMY EDUCATIONAL CHILD CARE FACILITY HAVE BEEN MODIFIED HEREIN IN RESPONSE TO SPECIFIC CHANGES SOUGHT BY THE KIDDIE ACADEMY FRANCHISE APPLICANT. BE ADVISED THAT THE EMPLOYEES OF KIDDIE ACADEMY DOMESTIC FRANCHISING, LLC WHO DRAINED THESE ARE NOT EXPERTS REGARDING THE BUILDING CODES AND/OR DAYCARE LICENSING REGULATIONS PROMULGATED IN THIS SPECIFIC JURISDICTION WHERE THIS KIDDIE ACADEMY EDUCATIONAL CHILD CARE FACILITY IS TO BE LOCATED. IT IS THE RESPONSIBILITY OF THE FRANCHISE APPLICANT TO EMPLOY AN ARCHITECT, DRAFTSMAN AND/OR ENGINEER TO ADAPT AND MODIFY THE PLANS AND SPECIFICATIONS TO THE FRANCHISE APPLICANT'S KIDDIE ACADEMY EDUCATIONAL CHILD CARE FACILITY AS REQUIRED BY THE BUILDING CODES AND/OR CHILD CARE LICENSING REGULATIONS IN THE JURISDICTION. KIDDIE ACADEMY ACCEPTS NO RESPONSIBILITY OR LIABILITY FOR ANY VIOLATION OF SUCH CODES OR REGULATIONS OR OTHERWISE.

NOTE: ANY CHANGES TO THESE PLANS REQUIRE PRIOR WRITTEN APPROVAL BY AUTHORIZED REPRESENTATIVE OF KIDDIE ACADEMY DOMESTIC FRANCHISING, LLC.

NOT FOR CONSTRUCTION

KIDDIE ACADEMY
EDUCATIONAL CHILD CARE

3415 BOX HILL CORPORATE CENTER DRIVE
ABINGDON, MD 21000

TITLE: FINISH INTERIOR ELEVATIONS	
FZE:	LOCATION: B.700 PROTOTYPE
DATE: 01-08-2016	DRAWN BY: SMD
SCALE: NTS (24X36)	CHECKED BY: CGC
FILE NO:	SHEET NO.: 9 OF 12