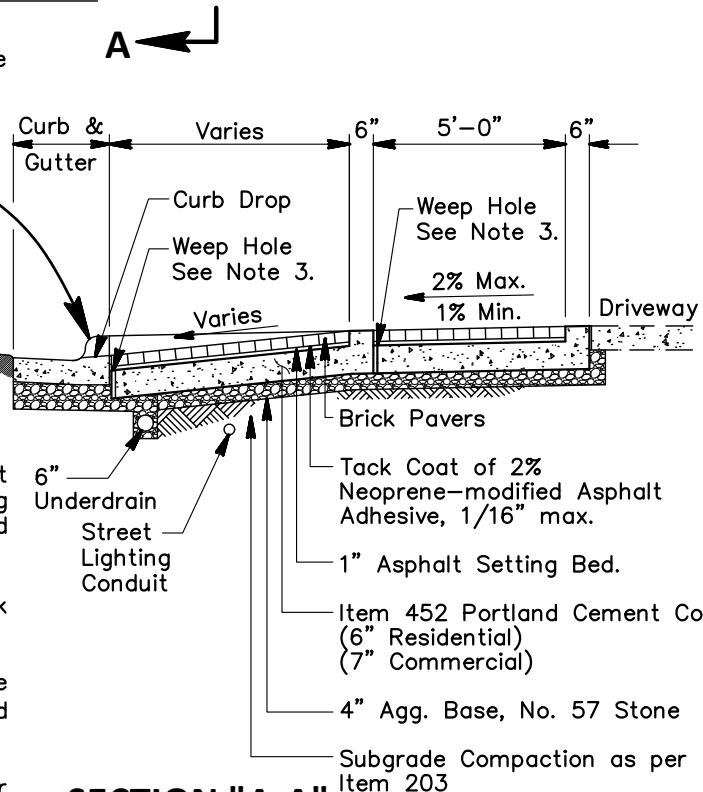
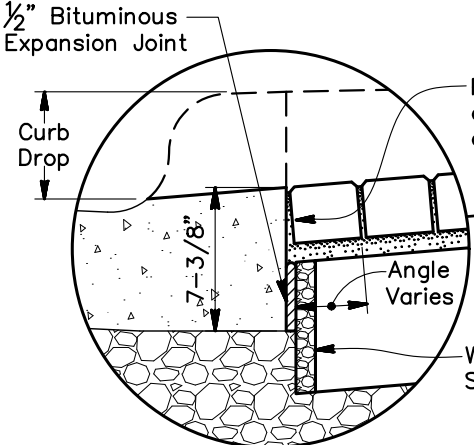


PLAN VIEW



SECTION "A-A"

NOTES

1. Contractor is responsible for protecting adjacent driveway, sidewalk, underdrain, and street lighting cable and replacement of the same if damaged due to Contractor's work.
2. See Std. Dwg. No. C-GC-94 for Brick Sidewalk notes.
3. 1-in R Weep Holes Formed in Concrete Base 24-in C/C filled with Washed #8 Aggregate and covered with water permeable geotextile.
4. Portland Cement Concrete Edging required for driveway approach.

Approved By:

 City Engineer, EMH&T Inc

 City Service Director

STANDARD DIMENSIONS
 FOR
**RESIDENTIAL BRICK
 DRIVEWAY APPROACH**

**CITY OF
 GROVE CITY, OHIO**

STANDARD
 CONSTRUCTION DRAWING

Revised		Drawing No.
February 2019		C-GC-93