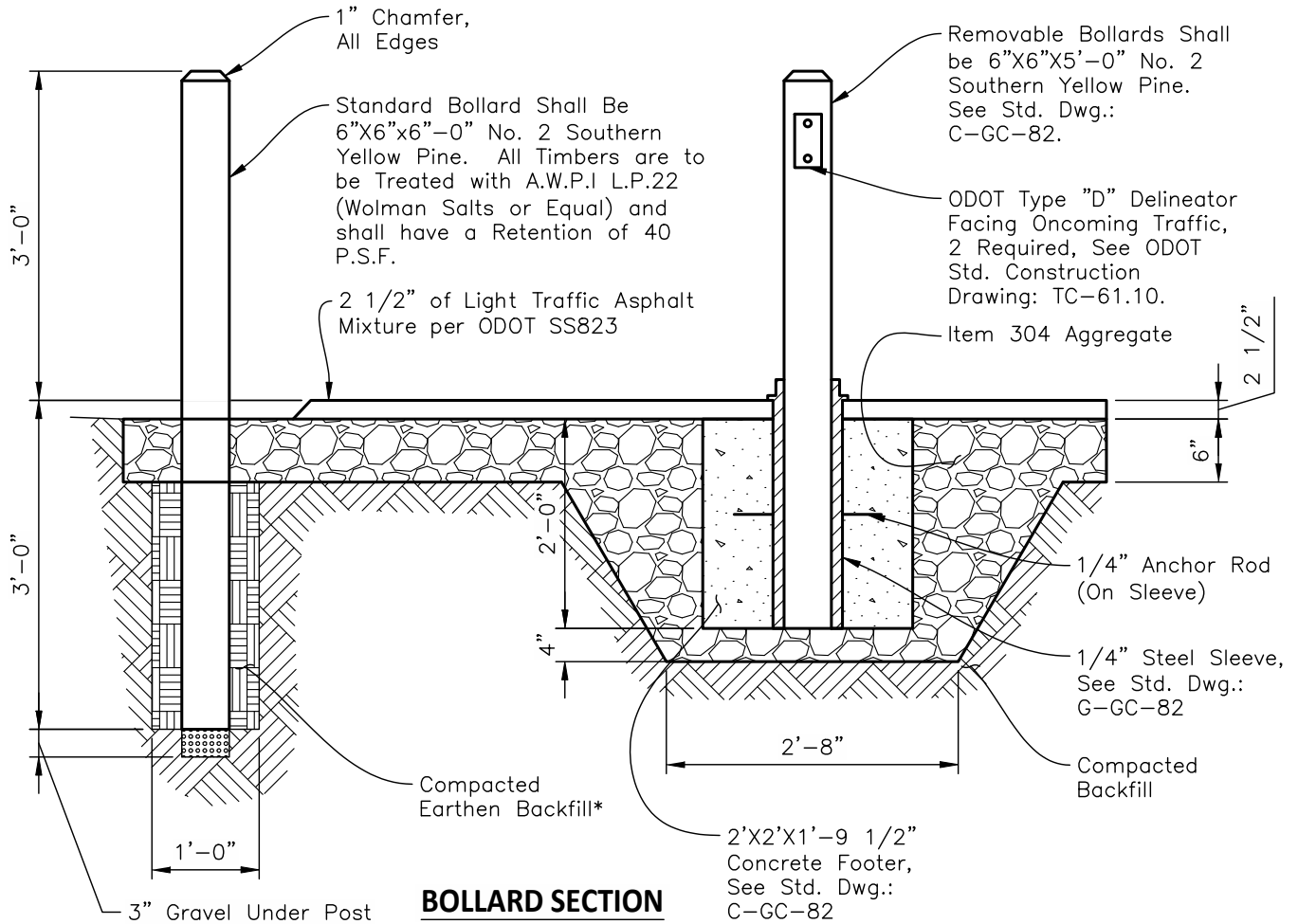




BOLLARD LAYOUT FOR 8' PAVEMENT



BOLLARD SECTION

* The Contractor shall place the Compacted Earthen Backfill in 6-in Lifts and shall correctly plumb each post.

Note: Upon completion of construction and when dry, a minimum of two coats of a water-repellant stain/sealer for wood shall be applied to all exposed wood surfaces. Contractor shall submit color sample to Grove City for approval.

Approved By:

 City Engineer, EMH&T Inc

 City Service Director

STANDARD DIMENSIONS
 FOR
**BOLLARD
 INSTALLATION
 DETAILS**

**CITY OF
 GROVE CITY, OHIO**

STANDARD
 CONSTRUCTION DRAWING

Revised		Drawing No.
February 2019		C-GC-81