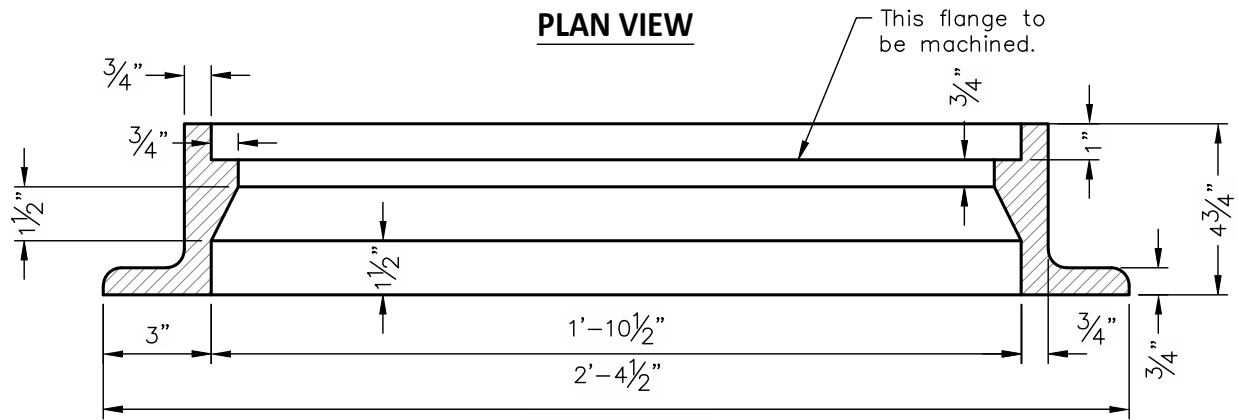




PLAN VIEW



SECTION

NOTE: This frame to be used only where specified by the City of Grove City. (Approximate weight 125 lbs.)

<p>Approved By:</p>  <p>City Engineer, EMH&T Inc</p>  <p>City Service Director</p>	<p>STANDARD DIMENSIONS FOR MODIFIED HEIGHT 24" MANHOLE FRAME</p>	<p>CITY OF GROVE CITY, OHIO</p>	
<p>STANDARD CONSTRUCTION DRAWING</p>		<p>Revised October 2015</p>	<p>Drawing No. C-GC-34</p>