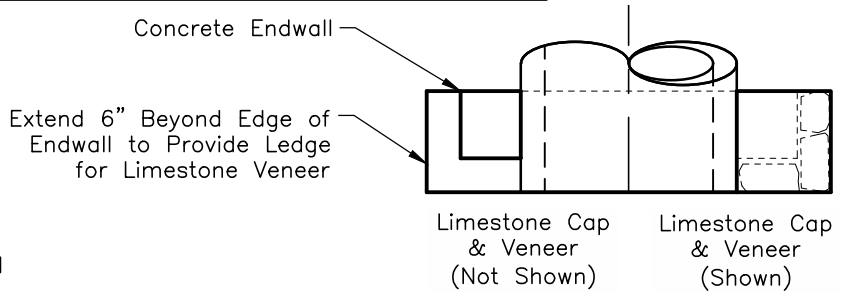
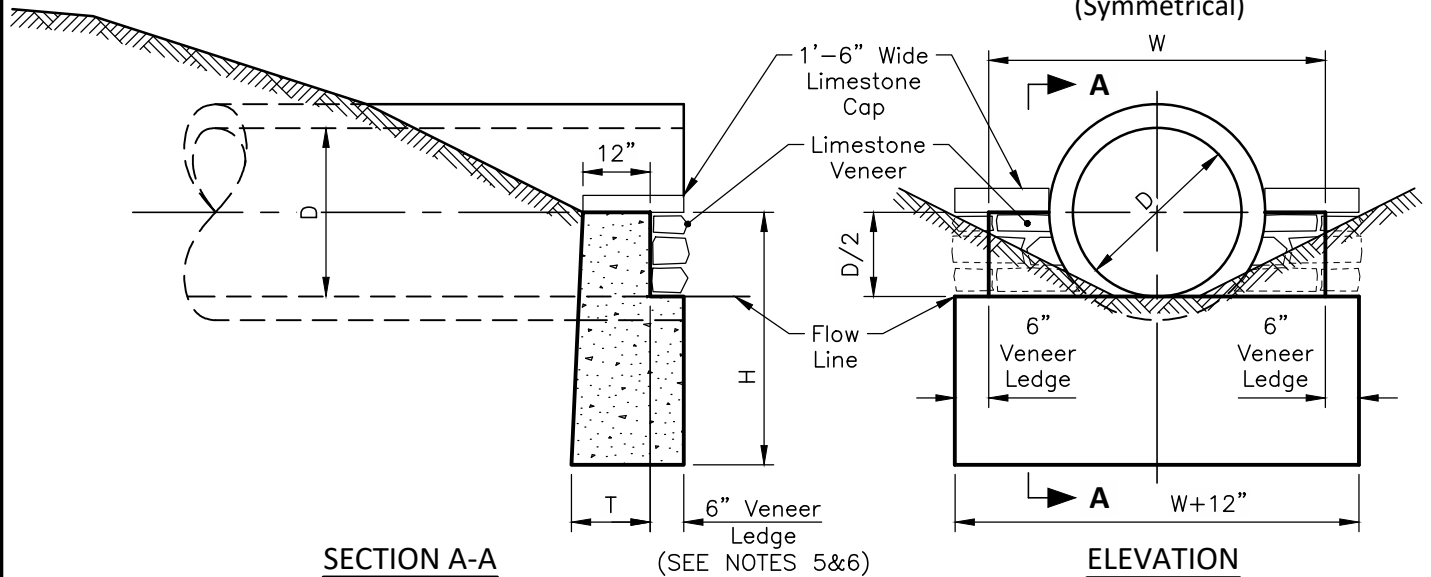


PIPE ENDWALL WITH STONE VENEER

D = Diameter of Pipe
 W = Width of Endwall
 H = Height of Endwall
 T = Thickness at Bottom of Endwall



PLAN VIEW
(Symmetrical)



SECTION A-A

6" Veneer Ledge
(SEE NOTES 5&6)

ELEVATION

Note: All pipes terminating at a headwall or endwall must be concrete pipe from the headwall or endwall to the next upstream structure.

Approved By:

 City Engineer, EMH&T Inc

 City Service Director

STANDARD DIMENSIONS
 FOR
PIPE ENDWALL

**CITY OF
 GROVE CITY, OHIO**

STANDARD
 CONSTRUCTION DRAWING

Revised	Sheet	Drawing No.
February 2019	1/2	C-GC-23

DETAIL NOTES:

1. Stone Facing shall be on all exposed surfaces of the outlet structures, unless an exception is granted by the City.
2. Stone is to be North Shore Bluff Limestone. Alternate selections must be approved by the City Service Director.
3. 1/2" Max dry laid look joints hold mortar back 3" Min.
4. Vary thickness of adjacent horizontal stone courses. Whenever possible lay large chunks and fill in around with thinner stones.
5. Pipe end shall be flush with the 6" veneer ledge.
6. Concrete quantities presented in the table are for the endwall only.
7. See Sheet 1/2 for additional information.

D = Diameter of Pipe
W = Width of Endwall
H = Height of Endwall
T = Thickness at Bottom of Endwall

ENDWALL FOR CONCRETE PIPE					
D	W	H	T	Concrete Cu. Yds. without Stone Veneer	Concrete Cu. Yds. with Stone Veneer
12"	2'-0"	3'-0"	12"	0.20	0.38
15"	2'-6"	3'-2"	12"	0.25	0.46
18"	3'-0"	3'-3"	12"	0.31	0.44
21"	3'-6"	3'-4"	12"	0.37	0.62
24"	4'-0"	3'-6"	12"	0.43	0.70
27"	4'-6"	3'-8"	12"	0.49	0.72
30"	5'-0"	3'-9"	12"	0.56	0.78
33"	5'-6"	3'-10"	12"	0.62	0.96
36"	6'-0"	4'-0"	12"	0.69	1.06
39"	6'-6"	4'-2"	12"	0.77	1.17
42"	7'-0"	4'-3"	12"	0.84	1.26
48"	8'-0"	4'-6"	14"	1.09	1.56
54"	9'-3"	4'-9"	14"	1.32	1.90
60"	10'-6"	5'-6"	16"	1.93	2.53

Approved By:

City Engineer, EMH&T Inc

City Service Director

STANDARD DIMENSIONS
FOR
PIPE ENDWALL

CITY OF GROVE CITY, OHIO

STANDARD CONSTRUCTION DRAWING

Revised	Sheet	Drawing No.
February 2019	2/2	C-GC-23