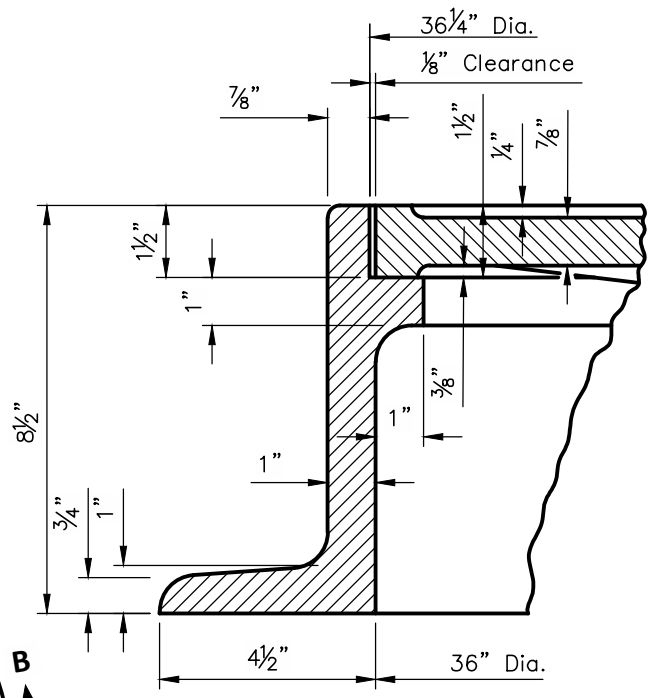
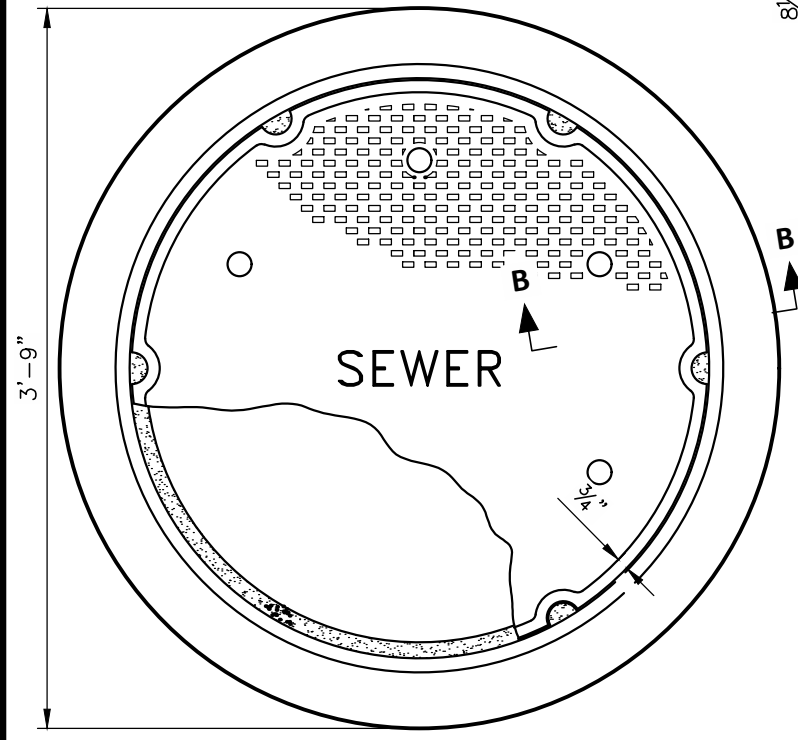


BOTTOM VIEW OF COVER

SECTION A-A



SECTION B-B



TOP VIEW OF ASSEMBLY

DETAIL NOTES:

Material shall be first quality soft gray cast iron. The top surface shall have an approved type of non-skid tread.

Cover weight (Approx.) = 315 lbs.
 Frame weight (Approx.) = 485 lbs.

Approved By:

 City Engineer, EMH&T Inc

 City Service Director

STANDARD DIMENSIONS
 FOR
**36" MANHOLE FRAME
 & COVER CASTINGS
 FOR STORM SEWERS**

**CITY OF
 GROVE CITY, OHIO**
 STANDARD
 CONSTRUCTION DRAWING
 Revised
 October 2015
 Drawing No.
 C-GC-11