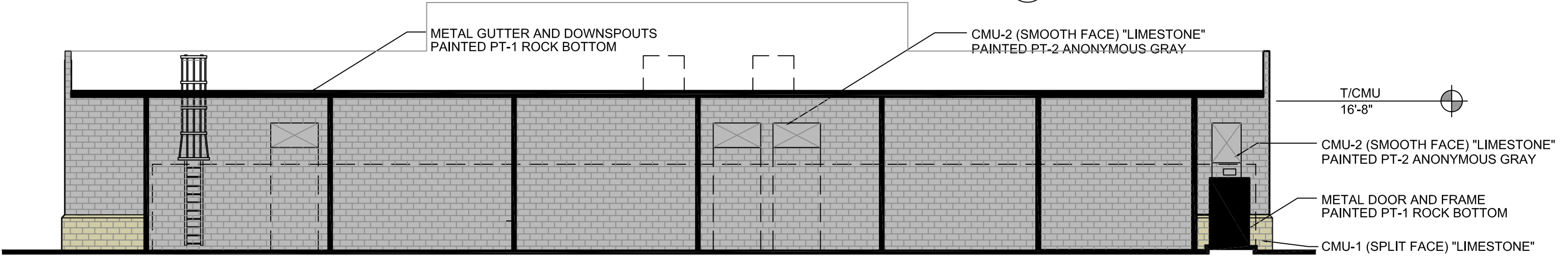


1 WEST ELEVATION
SCALE: 3/32" = 1'-0"



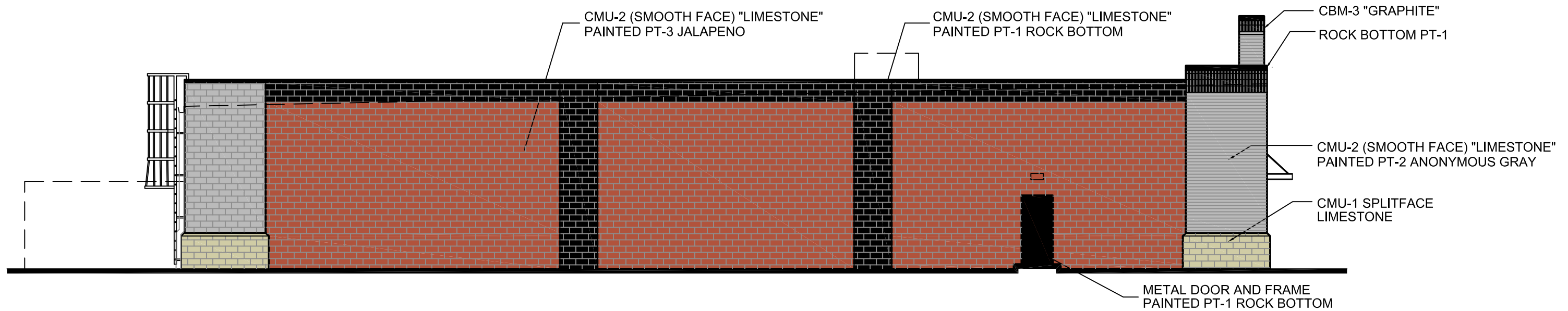
2 EAST ELEVATION
SCALE: 3/32" = 1'-0"

EXTERIOR MATERIALS:

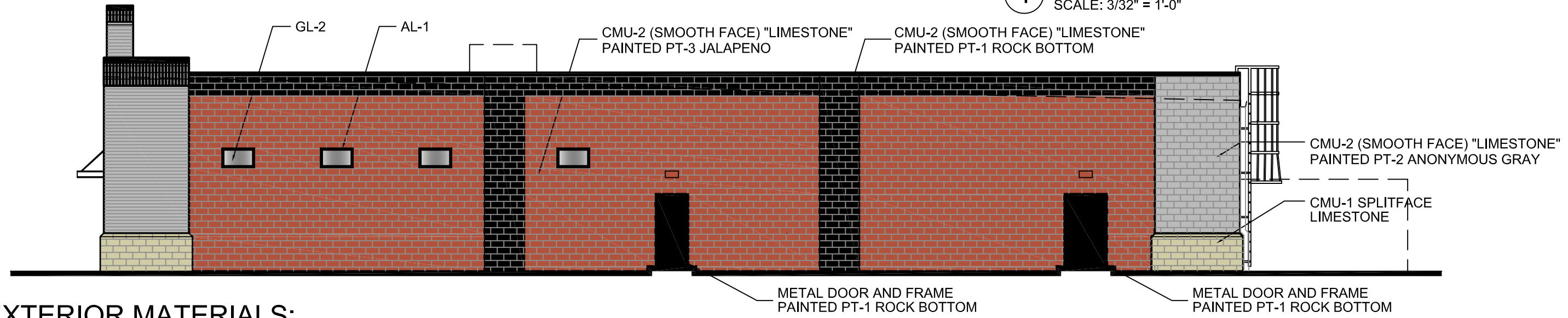
CBM-1	SPEC BRIK 4" TALL x 16" LONG x 8" WIDE CONCRETE BRICK MASONRY COLOR - SLATE GRAY- BRIXMENT COLOR C57 MORTAR	PT-1	SHERWIN WILLIAMS 7062 ROCK BOTTOM
CBM-2	SPEC BRIK 4" TALL x 16" LONG x 8" WIDE CONCRETE BRICK MASONRY COLOR - CHESAPEAKE BLEND BRIXMENT COLOR X25 MORTAR	PT-2	SHERWIN WILLIAMS 7046 ANONYMOUS
CBM-3	SPEC BRIK 4" TALL x 16" LONG x 8" WIDE CONCRETE BRICK MASONRY COLOR - GRAPHITE- BRIXMENT COLOR X25 MORTAR	PT-3	SHERWIN WILLIAMS 6629 JALAPENO
CMU-1	DESIGN BLOCK SPLIT FACE BLOCK w/ SILL BLOCK MASONRY COLOR - LIGHT SIERRA	AL-1	BLACK ANODIZED ALUMINUM
CMU-2	MAJESTIC BLOCK SMOOTH FACE BLOCK COLOR - LIMESTONE WITH FLAMINGO BRIXMENT COLOR C380 MORTAR	GL-1	1" INSULATING GLASS CLEAR WITH "LOW E" FINISH
		GL-2	1" INSULATING GLASS, (3M SUN CONTROL WINDOW FILM NIGHT VISION SERIES, NIGHT VISION 25)

**NEW FACILITY FOR:
POINT BLANK RANGES AND SHOPS**
EXTERIOR ELEVATIONS
TURNBERRY COURT GROVE CITY, OHIO





1 NORTH ELEVATION
SCALE: 3/32" = 1'-0"



2 SOUTH ELEVATION
SCALE: 3/32" = 1'-0"

EXTERIOR MATERIALS:

- CBM-1 SPEC BRIK 4" TALL x 16" LONG x 8" WIDE CONCRETE BRICK MASONRY
COLOR - SLATE GRAY- BRIXMENT COLOR C57 MORTAR
- CBM-2 SPEC BRIK 4" TALL x 16" LONG x 8" WIDE CONCRETE BRICK MASONRY
COLOR - CHESAPEAKE BLEND BRIXMENT COLOR X25 MORTAR
- CBM-3 SPEC BRIK 4" TALL x 16" LONG x 8" WIDE CONCRETE BRICK MASONRY
COLOR - GRAPHITE- BRIXMENT COLOR X25 MORTAR
- CMU-1 DESIGN BLOCK SPLIT FACE BLOCK w/ SILL BLOCK MASONRY
COLOR - LIGHT SIERRA
- CMU-2 MAJESTIC BLOCK SMOOTH FACE BLOCK COLOR - LIMESTONE
WITH FLAMINGO BRIXMENT COLOR C380 MORTAR

- PT-1 SHERWIN WILLIAMS 7062 ROCK BOTTOM
- PT-2 SHERWIN WILLIAMS 7046 ANONYMOUS
- PT-3 SHERWIN WILLIAMS 6629 JALAPENO
- AL-1 BLACK ANODIZED ALUMINUM
- GL-1 1" INSULATING GLASS CLEAR WITH "LOW E" FINISH
- GL-2 1" INSULATING GLASS, (3M SUN CONTROL WINDOW FILM NIGHT VISION SERIES,
NIGHT VISION 25)

**NEW FACILITY FOR:
POINT BLANK RANGES AND SHOPS**
EXTERIOR ELEVATIONS
TURNBERRY COURT GROVE CITY, OHIO

