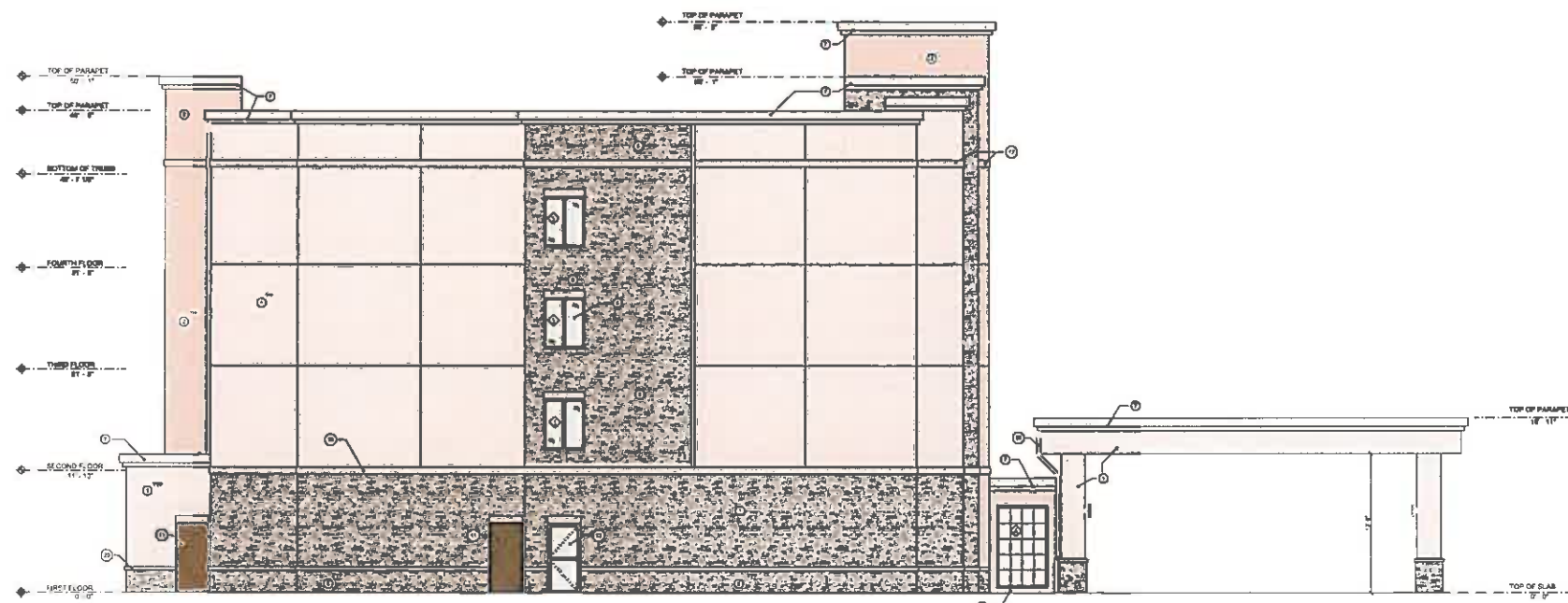


RIGHT VIEW  
1/8" = 1'-0"

ELEVATION CODED NOTES:

- 1 EIFS EMULSION BEIGE - SHERWIN WILLIAMS SW 6205
- 2 EIFS SAND CLING - SHERWIN WILLIAMS SW 8587
- 3 EIFS TRILETTY TAN - SHERWIN WILLIAMS SW 8587
- 4 EIFS ACCENT WHITE - SHERWIN WILLIAMS SW 8584
- 5 VENEER STONE HERITAGE LEDGESTONE COLLECTION SOUTHBRAN
- 6 8" WIDE EIFS HEADER TRILETTY TAN - SHERWIN WILLIAMS SW 8587
- 7 PROFILE EIFS CORNICE (ACCENT WHITE) - SW 8584
- 8 VINYL FIXED WINDOW (BRONZE) (SEE WINDOW SCHEDULE)
- 9 ALUMINUM STICFRONT SYSTEM (BRONZE) (SEE WINDOW SCHEDULE FOR MORE INFO)
- 10 4" x 1/2" PREFORMED ALUMINUM DOWNSPOUT COLOR (TRD) TIED TO STORM DRAIN SYSTEM SEE CIVIL DRAWINGS
- 11 STEEL DOOR (SEE DOOR SCHEDULE)
- 12 PTAC UNIT AIRWAY BREEZE AND LOUVER COVER SEE MECHANICAL AND ELECTRICAL FOR MORE INFO
- 13 ALUMINUM DOOR AND FRAME SEE DOOR SCHEDULE FOR MORE INFO
- 14 PRE-FINISHED SCUPPER SYSTEM W/ 4" x 1/2" DOWN SPOUT
- 15 2" x 2" FRESH AIR LOUVER FOR LAUNDRY SEE M.E.P. DWGS
- 16 EXTERIOR BUILDING SIGNAGE PROVIDE ELECTRIC POWERS AS REQUIRED COORDINATE W/ SIGNAGE COMPANY ON MOUNTING REQUIREMENT (SEE ELEC DWGS)
- 17 8" WIDE EIFS SAND TRILETTY TAN - SHERWIN WILLIAMS SW 8587
- 18 EXTERIOR WALL BOUNCE LIGHTS (BC-2) SEE ELECTRICAL SCHEDULE
- 19 8" WIDE EIFS SAND TRILETTY TAN - SHERWIN WILLIAMS SW 8587
- 20 4" WATERTABLE/BILL

#



LEFT VIEW  
1/8" = 1'-0"



4200 Gantz Rd

REVISIONS NO

DATE

BY

DRAWN BY:

DATE:

ELEVATIONS

102