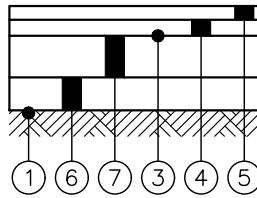
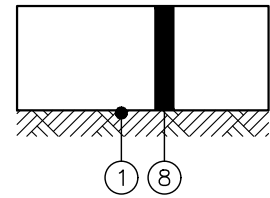


**TYPE 1A
COMPOSITE PAVEMENT**



**TYPE 1B
ASPHALT PAVEMENT**



**TYPE 1C
CONCRETE PAVEMENT**



PAVEMENT SECTION ITEMS

(Specification numbers refer to Columbus CMS)

- ① Compacted Subgrade or Utility Trench
- ② Item 305 – Portland Cement Concrete Base, T = 9-in, Class COC 6 or COC MS
- ③ Item 407 – Tack Coat (Rubberized per 702.13 for Concrete Base)
- ④ Item 441 – Asphalt Concrete Intermediate Course, Type 2, (448), T = 1.75-in
- ⑤ Item 441 – Asphalt Concrete Surface Course, Type 1, (448), PG 70-22 MT = 1.50-in
- ⑥ Item 304 – Aggregate Base, T = 6-in
- ⑦ Item 302 – Bituminous Aggregate Base, T = 8-in
- ⑧ Item 452 – Portland Cement Concrete Pavement, T = 12-in, Class COC 6 or COC MS

DETAIL NOTES

- 1. Trench width, "W", shall be as shown on the applicable pipe trench, bedding, and backfill standard drawing (C-GC-26).
- 2. Unless otherwise specified, payment limit for pavement replacement shall be W + 2-ft.
- 3. No recycled Portland Cement Concrete will be permitted for the trench backfill.
- 4. When Low-Strength Mortar Backfill, Type 2 (LSMB, Type 2 per Columbus CMS Item 613) is used, Item 304, Aggregate Base shall be omitted. Type, 1, 3, & 4 LSMB are not permitted.
- 5. Trench shall be neatly saw cut prior to pavement replacement and butt joints with existing pavement shall be heat welded per Columbus Supplemental Specification 1541 (Thermal Bond Asphalt Repair).
- 6. When trench is less than 2-ft from an adjacent curb, the pavement replacement limit shall be extended to the curb.
- 7. Replace any removed traffic markings according to Columbus CMS Item 644.

Approved By:

 City Engineer, EMH&T Inc

 City Service Director

STANDARD DIMENSIONS
 FOR
**PAVEMENT
 REPLACEMENT FOR
 ARTERIAL STREETS**


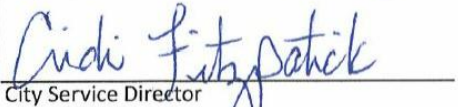
**CITY OF
 GROVE CITY, OHIO**

STANDARD
 CONSTRUCTION DRAWING

Revised	Sheet	Drawing No.
February 2019	1/2	C-GC-66

DETAIL NOTES CONT.:

8. Backfill of all trenches shall be low-strength mortar backfill as per Item 613 with a minimum density of 125 lbs/cu.ft. Use type 1 or type 2 spec only, type 3 and 4 are not permitted.
9. Permanent repavement shall not be done immediately after completing backfill. The edge shall be cut vertically and trimmed behind all broken pavement to provide a single straight line. Temporary pavement shall be installed when permanent pavement cannot be immediately replaced.
10. Alternate backfill Item 912 – compacted granular (No. 304 limestone) backfill as per item 912 shall only be used when approved by the city.
11. Item 441, Asphalt concrete, Type 2, placement not to exceed 3”, compacted, per course. (301 – 6-in Max. lift; 441 Type 1 – 2-in Max. lift.)
12. Tack coat, Item 407 bituminous material, SS-1, applied at a rate of 0.1 gal. per sq. yd. and cover consisting of crushed gravel or limestone, size no. 9.
13. Existing pavements less than 3 feet in width remaining adjacent to curb after excavation shall be removed and replaced.
14. For all sanitary sewers the bedding extends from 6-in below the bottom to 12-in above the top of the pipe. Use No. 4 limestone for all trench depths greater than 6-ft.
15. Item numbers shown refer to the current State of Ohio Department of Transportation "Construction and Material Specifications" (ODOTCMS) and the current City of Columbus "Construction and Material Specifications" (CMSC) Item numbers. The greater requirement shall take precedence unless waived by the City Engineer (submittal required).
16. This pay Item shall be included in the replacement of traffic pavement markings with 644 Thermoplastic.
17. Warranty: All pavement repairs shall be guaranteed for one year to refill settled areas, seal joints, or remove and repair any defect as directed by the City Engineer.

<p>Approved By:</p>  <p>City Engineer, EMH&T Inc</p>  <p>City Service Director</p>	<p>STANDARD DIMENSIONS FOR</p> <p>PAVEMENT REPLACEMENT FOR ARTERIAL STREETS</p>	<p>CITY OF GROVE CITY, OHIO</p>		
		<p>STANDARD CONSTRUCTION DRAWING</p>		
<p>Revised February 2019</p>	<p>Sheet 2/2</p>	<p>Drawing No. C-GC-66</p>		