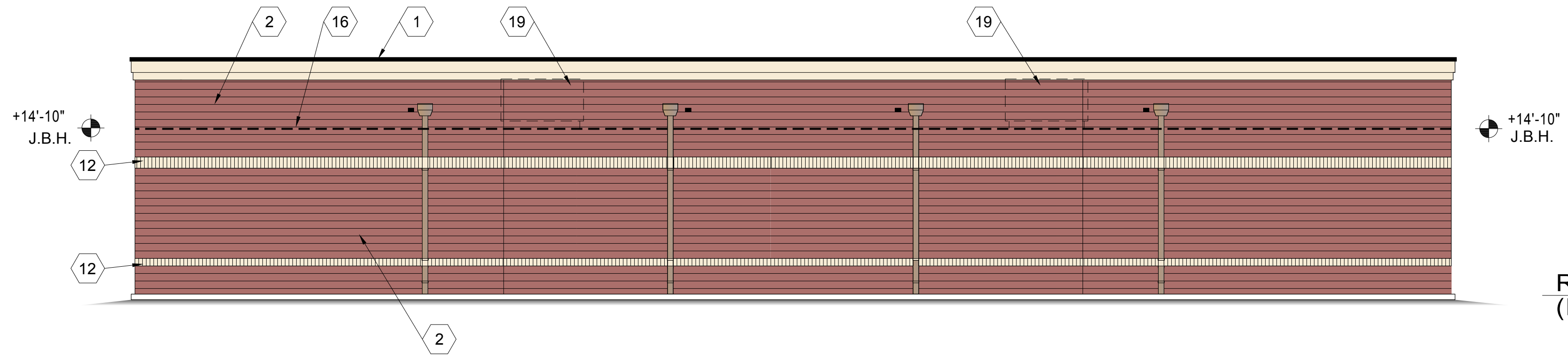
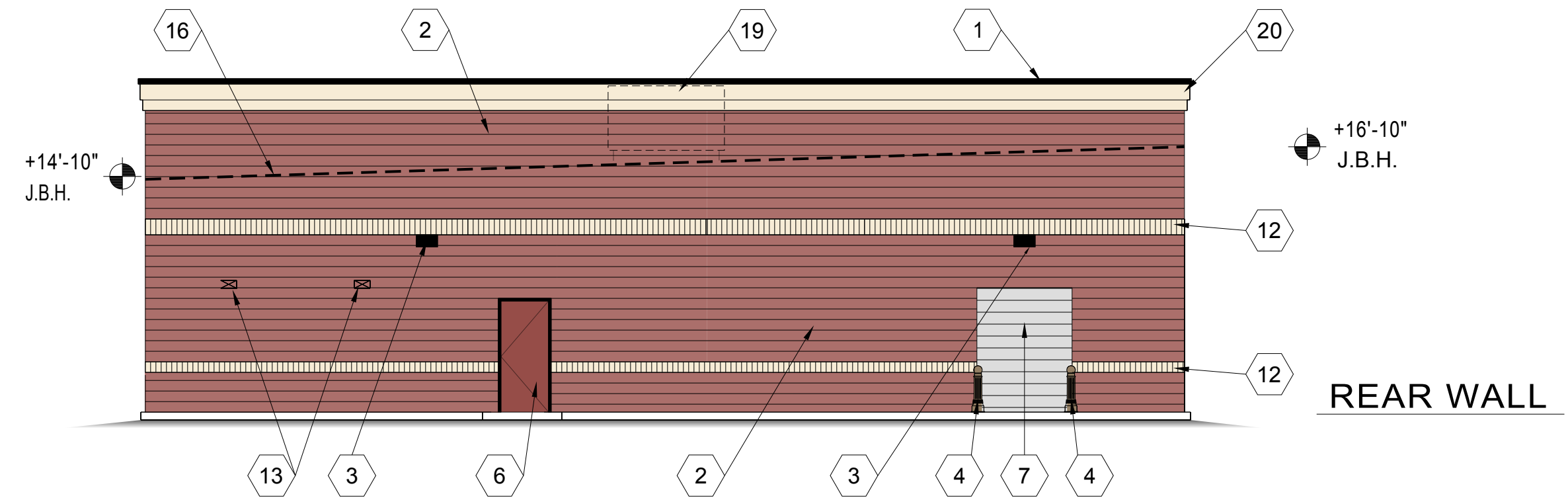


Received by  
City of Grove City  
11-27-18

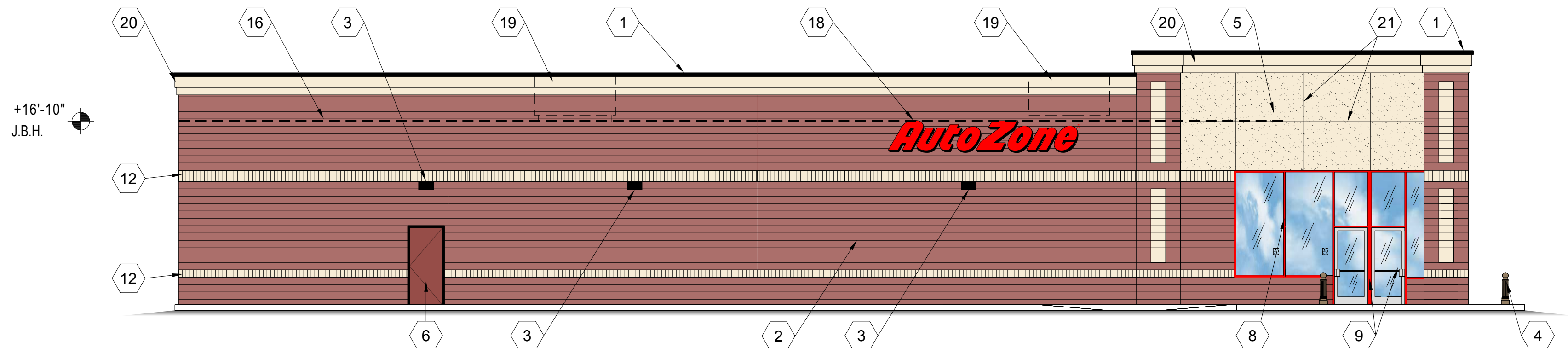
FRONT WALL



RIGHT SIDE WALL  
(LOW SIDE)



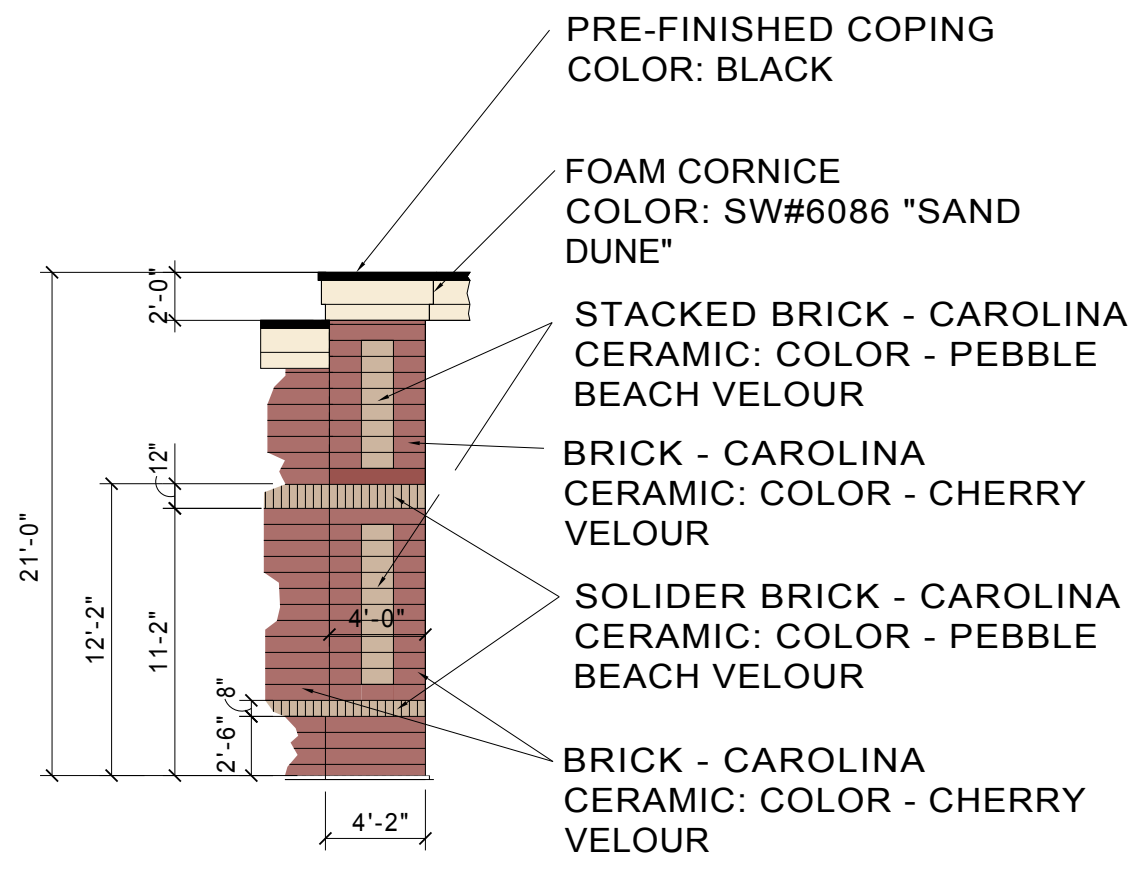
REAR WALL



LEFT SIDE WALL  
(HIGH SIDE)

- 1 PREFINISHED ALUMINUM COPING  
COLOR: BLACK
- 2 BRICK - CAROLINA CERAMIC: COLOR - CHERRY VELOUR
- 3 WALL MOUNTED LIGHT FIXTURE - BRONZE FINISH
- 4 DECORATIVE BOLLARD - BLACK
- 5 STUCCO FINISHED SOFFIT PAINTED  
COLOR: SW#6086 SAND DUNE
- 6 PAINT MAN DOOR TO MATCH WALL & FRAME BLACK
- 7 DO NOT PAINT OVERHEAD DOOR PAINT  
ANGLES BLACK
- 8 ALUMINUM STOREFRONT - RED KYNAR FINISH
- 9 GLASS AND ALUMINUM DOORS - CLEAR  
ANODIZED FINISH
- 10 FRONT WALL SIGN - 30" AZ CHANNEL LETTERS
- 11 NOT USED
- 12 SOLDIER COURSE BRICK - CAROLINA CERAMIC:  
COLOR - PEBBLE BEACH VELOUR
- 13 TOILET WALL VENTS PAINT TO MATCH WALL
- 14 STORE ADDRESS - 6" WHITE REFLECTIVE NUMBERS
- 15 SCUPPERS AND DOWNSPOUTS. COLOR: BRONZE.  
ADJACENT 4"H. X 6"W. OVERFLOW SCUPPER.  
FLOWLINE 2" ABOVE ROOF.
- 16 BOND BEAM AT ROOF LINE
- 17 CORRUGATED PIPE PAINTED AUTOZONE RED
- 18 LEFT WALL SIGN - 24" AZ CHANNEL LETTERS
- 19 HVAC UNITS SCREENED BEHIND PARAPET WALL
- 20 FOAM CORNICE PAINT COLOR: SW#6086 "SAND DUNE"
- 21 1" VERTICAL AND HORIZONTAL V-GROVE  
SCORED JOINTS (TYP.)

ELEVATION KEYNOTES



EXTERIOR SCHEME AT PILASTER

CE1

Color Elevation  
AutoZone Store #6121  
GROVE CITY, OH

